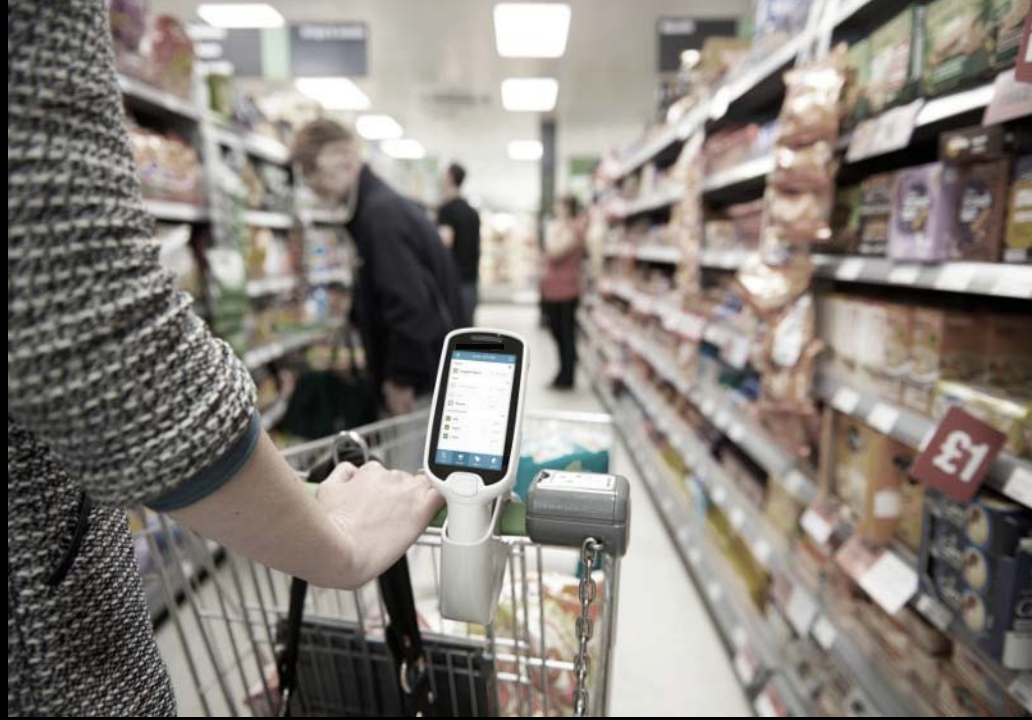




MC18

Mobile Computer

Accessories Guide



MC18 Series

CONFIGURATION & ACCESSORY GUIDES are available on [The Source](#) and [PartnerCentral](#)

For access to additional product information including this guide, please visit:

www.zebra.com/mc18

Find Product Information in the **EMC Product Portfolio** on [The Source](#) and [PartnerCentral](#)



Partner Central

ENTERPRISE MOBILE COMPUTING

EMC PRODUCT PORTFOLIO

- EMC Resources
- Zebra Solutions At A Glance
- Enterprise Mobile Computing
 - Knowledge Worker Portfolio
 - Line Worker Portfolio
 - EMC Software & Solutions
- Topical Content
 - MSI OS Strategy
 - The Value of Enterprise Class Products

CUSTOMER FACING

FIELD MOBILITY

TASK SPECIFIC

INDUSTRIAL MOBILITY

The screenshot shows a webpage layout for the EMC Product Portfolio. It features a blue header with the 'Partner Central' logo. Below the header, the text 'ENTERPRISE MOBILE COMPUTING' is displayed. The main heading is 'EMC PRODUCT PORTFOLIO'. To the right of the heading are four categories with corresponding images: 'CUSTOMER FACING' (two women at a counter), 'FIELD MOBILITY' (a person in a green shirt in a store), 'TASK SPECIFIC' (a woman in a blue shirt), and 'INDUSTRIAL MOBILITY' (a person in an orange safety vest). On the left side, there is a list of resources and content, including 'EMC Resources', 'Zebra Solutions At A Glance', 'Enterprise Mobile Computing' (with sub-items: Knowledge Worker Portfolio, Line Worker Portfolio, EMC Software & Solutions), and 'Topical Content' (with sub-items: MSI OS Strategy, The Value of Enterprise Class Products).

Step 1: Choose an MC18 configuration

WIN CE7

OPTION	PART NUMBER	DESCRIPTION
MEMORY	MC18 A -00-KIT-XXX	512MB RAM, 2GB FLASH,
	MC18 G -00-KIT-XXX	1GB RAM, 4GB FLASH,
QUANTITY	MC18X-00-KIT- 1 X	1-pack,
	MC18X-00-KIT- 10 X	10-piece bulk pack,

ANDROID KITKAT

OPTION	PART NUMBER	DESCRIPTION
Single or 10 pack	MC18G-00-KIT- 01 X	Single pack
	MC18G-00-KIT- 10 X	10-piece bulk pack

What Ships with every MC18

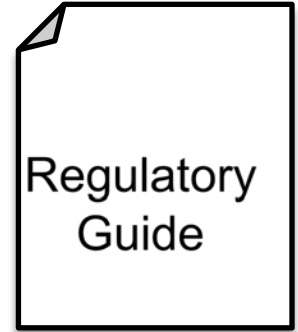


MC18

(Electronic User Guide loaded onto device)



1x Battery



Regulatory Guide

Step 1: Choose a spare battery

MC18 Battery

MC18 2,275 mAh PowerPrecision + Lithium-Ion Battery
PowerPrecision + Batteries: Advanced new battery technology integrated into our newest devices bringing a higher level of intelligence to deliver maximum performance

Information stored on each PowerPrecision+ battery:

- Continuously updated capacity as battery ages
- Charge accepted per type of charger
- Time to fully charge and time to fully discharge
- Elapsed time since first use
- Dynamically models the battery life based on historical usage

Supported features:

- **Advanced state of health:** actively measures and calculates the battery capacity under standard load conditions and temperature
- **Advanced state of charge:** time to empty under present usage and time to full under present charge condition



Single
Battery

BTRY-MC18-27MAG-01

10-PK
Battery

BTRY-MC18-27MAG-10

STEP 2: Choose a charging method

Single Slot Cradles



**Single Slot
Locking
Cradle**

CRD-MC18-1SLOT-01

3-Slot Cradles

**3-Slot Non-
Locking High
Density Cradle**

CRD-MC18-3SLOTH-01

**MC18 3-Slot
Locking High
Density Cradle**

CRD-MC18-3SLCKH-01

**MC18 3-Slot
Locking Super
High Density
Cradle**

CRD-MC18-3SLCKS-01



All MC18 Cradles require Interconnect cables, PWR5-14000-241R, DC line cord, and Country Specific AC line cord sold separately.

Cradle Accessories

**Cradle Release Key
(QTY-20)**

KT-MC18-CKEY-20



Used to mechanically unlock the MC18 Terminal from the 3-Slot Cradles and 1-Slot Cradles.

**Cradle Cover Removal
Tool (QTY-1)**

KT-MC18-CTOOL-01



Designed to remove cradle top housing for the MC18 3-Slot Cradles where hand space is limited.

Step 4a: Choose cradle accessories

Power Supply

PWRS-14000-241R

PWR SPLY: 100-240VAC, 12VDC, 9A .



Power Supplies for MC18 Cradles. Requires DC Line cord and Country Specific AC Line cord (sold separately)

DC "Y" Cables

25-66210-01R

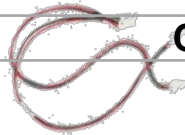
19.5 Inch

25-67592-01R

1 Meter

CBL-MC18-Y2MET-01

Cable 2 Meter

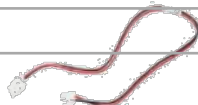


DC "Y" Cables run from Power Supply to two separate charging cradles.

DC Cables

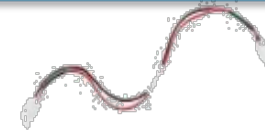
25-66420-01R

19.5 Inch



DC Charging Cable for 1-Slot Cradles Runs from the Power Supply to one charging cradle.

Cables



25-66431-01R

Interconnection Cable

(12.6 Inch). Connects Cradles to each other to run off one power supply (PWRS-14000-241R). Daisy Chain max = 6 Terminals per



CBL-MC18-EXINT1-01

Extension Cable

Cradle Power Extension Cable. Connects cradle to interconnect cable in order to lengthen cable and allow for easier installation.



25-66431-01R

USB Cable

MC18 USB Client Communication. Cable for Cradle to the host system.

Step 4b: Choose cradle connection method: Single Slot Cradles

Step 1

Power Supply.



- Power Supply: **PWRS-14000-241R**
- AC Line Cord: **AC Line Cord Matrix** is located on the last page

Step 2

Select one **DC Cable** to connect power supply to a maximum of 9 or 12 cradles depending on step 3.

DC Cable

12.6 Inch:
25-66431-01R



DC "Y" Cable

19.5 Inch:
25-66210-01R

1 Meter
25-67592-01R

2 Meter
25-67592-01R

Step 3

Choose Number of Interconnection Cradles based on Charging Mode your required charging mode.

Standard - 1.0 AMP:

MAX: 12 Cradles/Devices

Fast – 1.5 AMPS:

MAX: 9 Cradles/Devices

3a. Standard Charging Mode

Choose the number of cradle interconnect cables required based on the table below.

(12 Single Slot Cradles Max per Power Supply)



**Cradle Interconnect Cable
(12.6 inch): 25-66431-01R**

Number of Cradles	2	3	4	5	6	7	8	9	10	11	12
# of Interconnect Cables required	1	2	3	4	5	5	6	7	8	9	10

3b. Fast Charging Mode

Choose the number of cradle interconnect cables and power extension cables required based on the table below.

(9 Single Slot Cradles Max per Power Supply)



**Cradle Interconnect Cable
(12.6 inch): 25-66431-01R**

Number of Cradles	2	3	4	5	6	7	8	9
# of Interconnect Cables required	1	2	3	4	5	5	6	7

Step 4b: Choose cradle connection method: 3-Slot Cradles

Step 1

Power Supply.



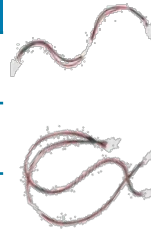
- **Power Supply:** **PWRS-14000-241R**
- **AC Line Cord:** **AC Line Cord Matrix** is located on the last page

Step 2

Select one **DC Cable** to connect power supply to a maximum of 9 or 12 cradles depending on step 3.

DC Cable

12.6 Inch:
25-66431-01R



DC "Y" Cable

19.5 Inch:
25-66210-01R

1 Meter
25-67592-01R

2 Meter
25-67592-01R

Step 3

Choose Number of Interconnection Cradles based on Charging Mode your required charging mode.

Standard - 1.0 AMP:

MAX: 4 x 3-Slot Cradles / 12 Devices

Fast – 1.5 AMPS:

MAX: 3 x 3-Slot Cradles / 9 Devices

3a. Standard Charging Mode

Choose the number of cradle interconnect cables and power extension cables required based on the table below.
(4 Connected Cradles Max)



Cradle Interconnect Cable (12.6 inch): **25-66431-01R**



Interconnection Extension Cable: **CBL-MC18-EXINT1-01**



3b. Fast Charging Mode

Choose the number of cradle interconnect cables and power extension cables required based on the table below.
(3 Connected Cradles Max)



Cradle Interconnect Cable (12.6 inch): **25-66431-01R**



Interconnection Extension Cable: **CBL-MC18-EXINT1-01**

Number of Cradles	2	3	4
# of Interconnect Cables required	1	1	2
# of Extension Cables required	2	3	4

Number of Cradles	2	3
# of Interconnect Cables required	1	1
# of Extension Cables required	2	3

Step 5: Choose cradle accessories

Keys and Tools

Used to mechanically unlock the MC18 Terminal from the 3-Slot & Single-Slot Cradles.



Cradle Release Key (QTY-20) **KT-MC18-CKEY-20**

This tool can be reused to reboot the MC18 terminal by connecting and holding the pins on the tool to the terminal while holding down the scan key for 10 seconds



Terminal Reboot Tool (5-PK) **KT-MC18-REBOOT-05**

Cradle Cover Removal Tool. The MC18 Cradle Cover Removal tool aids in the removal of the top housing of the 3-Slot Cradles.



Cradle Cover Removal Tool (QTY-1) **KT-MC18-CTOOL-01**

Deployment Kit



KT-MC18-CSTKIT-01

Mc18 Deployment Starter KIT

MC18 Deployment Starter KIT. Includes 20-pack of Release Keys (KT-MC18-CKEY-20), 5-pack of Terminal Reboot Tool (KT-MC18-REBOOT-05), and 1 Cradle Housing Tool (KT-MC18-CTOOL-01).

Carholder Mounting KIT



PSS-3SH01-00R

Mc18 Carholder Mounting KIT

This holder allows mounting the MC17 mobile computer on a shopping cart.

Step 6: Choose an AC line cord

Country	Three Wire Grounded AC Line Cord
Abu Dhabi	50-16000-220R: 1.8M long, CEE 7/7 plug.
Australia	50-16000-217R: 1.9M long, AS 3112 plug.
Bolivia	50-16000-220R: 1.8M long, CEE 7/7 plug.
Brazil	50-16000-727R: 18AWG, 250V, 16A, BR (3w).
China	50-16000-217R: 1.9M long, AS 3112 plug. 50-16000-257R: 1.8M long, IEC 60320 C13 plug.
Dubai	50-16000-220R: 1.8M long, CEE 7/7 plug.
Egypt	50-16000-220R: 1.8M long, CEE 7/7 plug.
Europe	50-16000-220R: 1.8M long, CEE 7/7 plug.
Hong Kong	50-16000-219R: 1.8M long, BS1363 plug.
India	50-16000-669R: 1.9M long, BS 546 plug.
Iran	50-16000-220R: 1.8M long, CEE 7/7 plug.
Iraq	50-16000-219R: 1.8M long, BS1363 plug.

Country	Three Wire Grounded AC Line Cord
Israel	50-16000-672R: 1.9M long, S132 plug.
Italy	50-16000-671R: 1.8M long, CIE 23-16 plug.
Japan	50-16000-218R: 1.8M long, NEMA 1-15P plug.
Korea	50-16000-220R: 1.8M long, CEE 7/7 plug. 50-16000-256R: 1.8M long, CEE7/7 plug.
Malaysia	50-16000-219R: 1.8M long, BS1363 plug.
New Guinea	50-16000-217R: 1.9M long, AS 3112 plug.
Russia	50-16000-220R: 1.8M long, CEE 7/7 plug.
Singapore	50-16000-219R: 1.8M long, BS1363 plug.
UK	50-16000-219R: 1.8M long, BS1363 plug.
US	23844-00-00R: 7.5 feet long. 50-16000-221R: 1.8M long, USA NEMA 5-15P.
Vietnam	50-16000-220R: 1.8M long, CEE 7/7 plug.

Optional custom branding

- Left and right branding
- Customisable for all our customers
- Vinyl peel and stick



Please consult your local Sales Representative for more details